



**"TEMPUS"** Design by Urbi et Orbi studio in 2013.

Available in 3 finishing variants. The concrete could be the **"basic"** one, uniform colored in its mass, **"sand"** or **"terrazzo"** polished finishing.

## Properties

---

Our company specializes in the production of concrete design elements. The raw material that we use is a unique reinforced mixture of cement, additives enhancers and special aggregates.



## Aftercare

Each design object that is made of concrete, acquires value thanks to its uniqueness, its character, its aspect. By the selection of concrete, it will be supposed in advance that we have to respect its nature. We will be ready to make reprocesses in our habits. In order to its ageing will be done smoothly, we will attend it as much as it needs, without deterioration. Although the concrete is a very hard material, it could break like a marble or a stone or ceramic. For this reason avoid the impact of heavy objects directly onto the concrete surface.

Please follow the instructions below to ensure the best possible maintenance of the product you selected.

The final properties are like a stone or marble. Liquids with coloring should be swept and removed with water before dry. Be careful that no acids, alkalis or solvents, come into contact with the surface. If so, it should be removed immediately with water. Chlorine-based cleaning agents or alkalis are not recommended. We suggest the usage of lukewarm water with a mild detergent neutral when required and soft vettex cloths.

## Colors sort by category

Colored in its mass with pigments

### •Grey

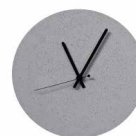


### •Basic

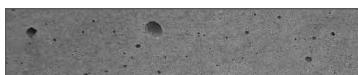
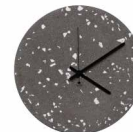
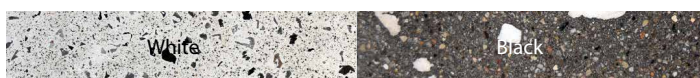


Available in three shades of Grey, Ivory or Brown/Beige, with various grades of hue in every piece, as well as between the pieces. Every piece may appears with color tone variants at its surface, as also between the pieces or the sample.

### •Sand



### •Terrazzo



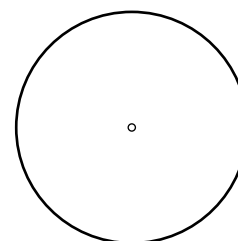
Concrete surface displays several air holes. This is a natural characteristic of concrete.

## Dimensions/Weight

Diameter: 32 cm

Thickness: 3 cm

2,5kg



Ø320 mm

30 mm

## Packaging

36x36x15cm

4kg

RECYCLED CARDBOARD 

All rights reserved."Urbi et Orbi" brand and logos are registered trademarks. The industrial models of the product, the designation and the product photos are protected by the applicable copyright laws.

Urbi et Orbi reserves the right, in order to improve the capacities of the products, to make modifications to them, as if reference the raw materials, dimensions, weight, qualities or features, without prior notice.

